



 **MIAMI SAILING WEEK**



2015 SAILING INSTRUCTIONS FOR:





March 1 – March 7, 2015

STAR CLASS SAILING INSTRUCTIONS

1 Rules:

- 1.1 The regatta will be governed by the rules as defined in The Racing Rules of Sailing (RRS).
- 1.2 RRS Appendix P will apply. RRS Appendix P is changed to permit the hail to a protested boat to be either sail number or bow number.
- 1.3 The prescriptions of the national authority, US Sailing do not apply, except as noted in SI 22 below.

2 Notices to Competitors:

- 2.1 Notices to competitors will be posted on the official notice board located in the breezeway adjacent to the Snack Bar at Coral Reef Yacht Club (CRYC).

3 Crew Weight:

- 3.1 Star Class crew weight limits (STCR 31.1.3) will not be enforced.

4 Changes in the Sailing Instructions:

- 4.1 Changes in the Sailing Instructions will be approved by the Jury and the Organizing Authority and will be posted before 0900 hours of the day they will take effect, except that any change in the schedule of races will be posted by 2000 hours on the day before it will take effect.

5 Signals Ashore:

- 5.1 Signals made ashore will be displayed on the flagpole located at Coral Reef Yacht Club.
- 5.2 Code flag "AP" when displayed ashore means that the start has been postponed. The Warning Signal will be made not less than 90 minutes after removing the signal.

6 Schedule:

6.1 Schedule of racing:

Date - Day - Warning Signal

3/2	Monday	11:55 - one race planned
3/3	Tuesday	11:55 - one race planned
3/4	Wednesday	11:55 - one race planned
3/5	Thursday	11:55 - one race planned
3/6	Friday	11:55 - one race planned
3/7	Saturday	10:55 - one race planned – no warning signal made after 1300 hours.

- 6.2 The schedule above is subject to change due to weather conditions. Changes will be posted in accordance with SI 4.

- 6.3 After a long postponement, several short sounds will be made approximately one minute prior to removal of the postponement signal to alert boats that a race sequence will begin soon.

7 Class Flag:

- 7.1 The class flag will be a red star on a white background.

8 Racing Area:

- 8.1 The racing area is circle "Charlie" approximately 3NM to 4 NM south of Dinner Key Channel (See Official Notice Board for chart location)



9 Courses:

9.1 Course "0", Course "1", Course "3", or Course "4", STCR 34.3, Format A, STCR 34.3.7 may be used.

9.2 The Race Committee signal boat will display the course number with the distance and approximate magnetic bearing to the first mark prior to or with the Warning Signal.

9.3 The courses will not be shortened. This changes RRS 32.

9.4 Lengths of legs of the course will not be changed after the Preparatory Signal; this changes RRS 33(b).

10 Marks:

10.1 Inflatable marks will be used for the course. A description of these marks will be posted on the official notice board before racing begins.

10.2 A gate may be employed at Mark 3.

10.3 For courses "0" and "1" an offset mark will be set at mark 1 for all legs.

11 Check In:

11.1 Prior to the first Warning Signal of each race, boats shall sail past the stern of the Race Committee signal boat to be recorded. RRS A4.1 is changed to provide that boats not complying with this instruction will receive a score as a boat not starting without a hearing. This changes RRS 63.1 and A5.

12 The Start:

12.1 The starting line will be between a staff displaying an orange flag on the starboard end signal boat and a staff displaying an orange flag on the port end pin boat.

OR

A mid-line boat may be employed. If a mid-line boat is employed, the starting line shall be between a staff displaying an orange flag on the Race Committee signal boat and a staff displaying an orange flag on the mid-line boat, and the staff displaying an orange flag on the mid-line boat and a staff displaying an orange flag on the port end line boat. If a mid-line boat is employed, RRS 30.1 will not be used by the RC.

12.2 A race committee boat at the port end may display signals the same as those displayed on the race committee signal boat at the starboard end. Failure to display or incorrect timing from the race committee boat at the port end of the line shall not be grounds for redress.

12.3 A boat not starting within 10 minutes after the Starting Signal will be scored Did Not Start without a hearing. This changes RRS A4 and A5.

12.4 The recall number for a boat shall be her bow number.

12.5 Boats that are subject to rule 29.1, Individual Recall, at their starting signal, may be hailed by bow number on VHF channel 71 (See SI 23). Failure of the Race Committee to transmit or failure of a competitor to receive this information, mistaken transmissions, timeliness or order of hail shall not be considered grounds for granting redress. This changes rule 62.

12.6 A Race Committee boat displaying Code flag "G" may pass to windward of the fleet which means: "The Race Committee has signaled an abandonment, postponement or general recall. Boats are to return to the starting area immediately."

12.7 A Race Committee boat displaying Code flag "X" positioned near Mark 1 will attempt to notify premature starters and will display their bow numbers.

12.8 A Race Committee boat displaying a black flag positioned near Mark 1 will attempt to notify boats that have been disqualified in accordance with RRS 30.3 and will display their bow numbers. Any boat notified that she has been disqualified shall leave the race course immediately. However, if there are two races scheduled for that day, boats having been disqualified in the first race may stand by in an area outside the race course for the second race.



13 Change of Position of the Next Mark:

13.1 A change in the position of the next mark, the race committee will lay a new mark (or move the finishing line) and remove the original mark as soon as practicable. When in a subsequent change a new mark is replaced, it will be replaced by an original mark.

14 The Finish:

14.1 The finishing line will be between a staff displaying an orange flag on a Race Committee boat and a nearby yellow mark or a staff displaying an orange flag on a Race Committee boat at the port end of the line.

15 Time Limit:

15.1 The time limit will be as described in STCR 34.3.7 Format A.

15.2 RRS 35, A4 and A5 are changed to provide that boats finishing more than 60 minutes after the first boat to finish will be scored "Did Not Finish" without a hearing.

16 Protests:

16.1 Protest forms are available at the Jury desk inside the main lobby at Coral Reef Yacht Club.

16.2 Protests must be delivered within one hour of the Race Committee signal boat docking time. The protest time will be posted on the official notice board. The same protest time limit applies to all protests by the Race Committee and Jury about incidents they observe in the racing area and to request redress. This changes RRS 61.3 and 62.2.

16.3 Notices will be posted on the official notice board 30 minutes after the protest time limit to inform competitors of hearing in which they are parties or named as witnesses. This will constitute notification under RRS 63.2. Hearings will be held in order received.

16.4 Boats scored as having not started or not finished will be posted on the Notice Board within 30 minutes before the end of protest time. Requests for scoring inquiries must be in writing and delivered to the race committee within the protest time limit. Requests for redress should be delivered in writing to the Jury secretary within the protest time limit.

16.5 On the last day of racing a request for reopening a hearing shall be delivered:

- (a) Within the protest time limit if the requesting party was informed of the decision on the previous day;
- (b) No later than 30 minutes after the requesting party was informed. This changes RRS 66.

16.6 On the last day of racing a request for redress based on a Jury decision shall be delivered no later than 30 minutes after the decision was posted. This changes RRS 62.2

16.7 Protest Hearings will be held at Coral Reef Yacht Club.

17 Scoring:

17.1 The Low Point scoring system shall be employed.

17.2 Six races are scheduled. One completed race is required to constitute a series.

17.3 When four (4) or more races have been completed, a boats series score will be the total of her race scores excluding her worst race.

17.4 Penalties for violations of the notice of race, sailing instructions and the Racing Rules of Sailing which are not a Part 2 or Part 3 infringement are at the discretion of the international Jury and may include disqualification.

17.5 Scores will be posted on the official notice board.

17.6 Boats failing to meet the time limits of SI 15 will be scored Did Not Finish without a hearing.



18 Safety Regulations, Retiring:

18.1 Each owner/skipper is requested to familiarize and share with crew the safety and first-aid notice found in the skipper bag.

18.2 Boats in need of assistance from the race committee will wave an extended arm in the direction of any race committee vessel or call on VHF 71.

18.3 Boats retiring from racing will notify a race committee boat or, if not practical, inform the front desk at Coral Reef Yacht Club.

19 Replacement of Crew or Equipment:

19.1 A change of helmsman is not permitted.

19.2 Substitution of competitors will not be allowed without prior written approval of the Jury. Once a crewmember has changed, the original crew may not return. There shall be no crew exchange on the final day of racing.

20 Team and Private Support Boats:

20.1 Coach boats and private spectator boats are expected to monitor VHF 71 and render assistance to a boat in danger when requested by the boat, or at the request of the Race Committee or Jury.

20.2 Team leaders, coaches and other support personnel shall stay 100 meters outside areas where boats are racing from the time of the Warning Signal until all boats have finished racing.

20.3 A yacht shall receive no outside assistance from support boats or otherwise once she has left the dock for the day until the finish of the last race of the day, except in the case of emergency and/or towing supplied by the organizer and available to all participants

20.4 The Penalty for breaking 20.1, 20.2, or 20.3 will be at the discretion of the Jury up to and including disqualification of all boats associated with the team or private support boat.

21 Haul Out – Berthing:

21.1 There are no haul out or berthing restrictions.

22 Prescriptions That Apply:

RRS 61.4: Fees for Protests and Requests for Redress

US Sailing prescribes that no fees shall be charged for protests or requests for redress.

RRS 67: DAMAGES

US Sailing prescribes that:

- a. A boat that retires from a race or accepts a penalty does not, by that action alone, admit liability for damages.
- b. A protest committee shall find facts and make decisions only in compliance with the rules. No protest committee or US SAILING appeal authority shall adjudicate any claim for damages. Such a claim is subject to the jurisdiction of the courts.
- c. A basic purpose of the rules is to prevent contact between boats. By participating in an event governed by these rules, a boat agrees that responsibility for damages arising from any breach of the rules shall be based on fault as determined by application of the rules, and that she shall not be governed by the legal doctrine of 'assumption of risk' for monetary damages resulting from contact with other boats.

RRS 76.1: Exclusions Of Boats Or Competitors

US Sailing prescribes that an organizing authority or race committee shall not reject or cancel the entry of a boat or exclude a competitor eligible under the Notice of Race and Sailing Instructions for an arbitrary or capricious reason or for reason of race, color, religion, national origin, gender, sexual orientation, or age.

RRS 88.2: National Prescriptions



US Sailing prescribes that sailing instructions shall not change or delete rule 61.4, Appendix R, or its prescriptions to rules 67 or 76.1.

23 Radio Communications:

23.1 ISCYRA 31.2.6 will be amended to allow VHF radios to be carried on all boats for the sole purpose to listen to the actions of the Race Committee and to transmit in the event of an emergency.

23.2 The Race Committee may announce boats subject to RRS 29.1 on VHF 71. **See SI 12.5.**

24 Prizes:

24.1 A prize for the first place boat in the series for the Masters Division (skippers age 50 through 59 before the start of the first race),

24.2 A prize for the first place boat in the series for the Grand Masters Division (skippers age 60 and above before the start of the first race),

24.3 Competitors in the Master's Division and Grand Masters Division will also compete for series prizes,

24.4 Prizes for the first, second, third, fourth and fifth place boats in the series, and

24.5. The perpetual Bacardi Cup for the first place skipper and the Tito Cup for the first place crew in the series.

25 Trash Disposal, Clothing and Extra Sails:

25.1 Boats shall not put trash in the water, RRS 55. Trash may be placed aboard support and race committee boats.

25.2 The race committee will not accept items of clothing or sails.

26 Disclaimer of Liability:

26.1 Sailing is an activity that carries with it an inherent risk of damage and injury. Competitors participate in this regatta entirely at their own risk and are reminded to pay special attention to RRS 4, Decision to Race. The race organizers, including the OA, CRYC, Race Committee, Protest Committee, sponsors, volunteers, or any other affiliated organization or official, will not be responsible for damage to any boat or other property or the injury to any competitor, including death, sustained as a result of practice for or participation in this event on the water or ashore. By participating in this event, each competitor agrees to release the race organizers from any and all liability associated with such competitor's participation in this event to the fullest extent permitted by law. Rule 82 will not apply to the event in accordance with US Sailing regulations.

March 1 – 7, 2015

J/70 Class

Sailing Instructions

1 RULES

- 1.1 The regatta will be governed by the rules as defined in *The Racing Rules of Sailing* (RRS).
- 1.2 The following prescriptions of US Sailing shall apply: 61.4, 67, and 76.1.

2 NOTICES TO COMPETITORS

- 2.1 Notices to competitors will be posted on the regatta notice board located at Biscayne Bay Yacht Club.
- 2.2 The race committee will use VHF channel 72 to communicate with competitors on the water. Failure to hear any broadcasts shall not be grounds for redress.

3 CHANGES IN SAILING INSTRUCTIONS

Any changes will be posted before 0800 on the day it will take effect, except that any change in the schedule of races will be posted before 2000 the day before the change is to take effect.

4 SIGNALS MADE ASHORE

- 4.1 Signals made ashore will be displayed from the flagpole located at Biscayne Bay Yacht Club.
- 4.2 When flag AP is displayed ashore, '1 minute' is replaced by 'not less than 45 minutes' in the race signal.

5 CLASS FLAG

Class flags will be a white flag with the class insignia.

6 SCHEDULE

Thu, Mar 5 – Sat, Mar 7

1055 First Warning, subsequent races to follow.
No warning after 1400 on Saturday.

7 THE COURSES

- 7.1 The diagrams and descriptions in Attachment II show the courses, including the approximate angles between legs and the order in which marks are to be passed.
- 7.2 If only one leeward mark is present it shall be rounded to port.
- 7.3 The course identifier, approximate magnetic bearing and distance in nautical miles to the first mark will be displayed from the race committee signal boat prior to the warning signal for each race.

An example is shown below:

5	Five legs, finishing to weather
270	Approx magnetic bearing to weather mark
1.0	1.0 nm to weather mark

8 MARKS

- 8.1 The windward mark will be a white cylinder with a small orange offset mark. The leeward marks will be red with Bacardi logo. The starting mark will be a yellow tetrahedron. The finish mark will be yellow with a West Marine logo.
- 8.2 New marks, as provided in SI 11, will be orange cylinders.

9 THE START

- 9.1 The starting line will be between a staff displaying an orange flag on the race committee signal boat at the starboard end and either (a) a staff displaying an orange flag on the race committee pin boat, or (b) a yellow tetrahedron.
- 9.2 The Race Committee signal boat may be protected by a nearby inflatable limit mark, which shall rank as a starting mark. Boats shall not pass between the limit mark and the nearby signal boat when approaching the line to start. The area between the limit mark and the signal boat does not rank as an obstruction for purposes of RULES 19 and 20.
- 9.3 A boat starting later than ten (10) minutes after her starting signal will be scored Did Not Start (DNS). This changes Rule 29.1, where the word "four" is changed to "10", and Rule A4.1.

10 RECALLS

- 10.1 When an individual recall is signaled, the race committee will attempt to hail OCS boats on VHF.
- 10.2 The timing and order of such hails or the failure of a boat to hear the hail shall not be grounds for redress, changing RRS 62.

11 CHANGE OF THE NEXT LEG OF THE COURSE

To change the next leg, the race committee will lay a new mark (or move the finishing line) and remove the old mark as soon as practicable. When in a subsequent change a new mark is replaced, it will be replaced by an original mark.

12 THE FINISH

The finishing line will be between staffs displaying orange flags on Race Committee vessels or between a staff displaying an orange flag on a Race Committee vessel and a nearby mark.

13 TIME LIMITS

- 13.1 If no boat has passed Mark 1 within 45 minutes, the race will be abandoned.
- 13.2 The time limit for the first boat to sail the course and finish is 90 minutes.
- 13.3 Boats still racing more than 15 minutes after the first boat sails the course and finishes will be scored TLE (Time Limit Expired) without a hearing. This changes RRS 35, A5, and A11.

14 PROTESTS AND REQUESTS FOR REDRESS

- 14.1 Protest forms are available in the Jury Room located at Coral Reef Yacht Club and shall be delivered there within the protest time limit which is 60 minutes after the race committee finish boat docks after the last race of the day.
- 14.2 The race committee will post a list of penalties being assigned by the race committee prior to the end of protest time limit. The deadline for requesting redress based on these scores will be either 30 minutes after posting of the penalty notice or the protest time limit, whichever is later. This changes RRS 62.2.
- 14.3 Notices will be posted within 30 minutes of the protest time limit to inform competitors of hearings and arbitration hearings in which they are parties or named as witnesses. Hearings will be held in the Jury Room, beginning as soon as practical.
- 14.4 On the last day of the regatta a request for reopening a hearing shall be delivered (a) within the protest time limit if the party requesting reopening was informed of the decision on the previous day; (b) no later than 30 minutes after the party requesting reopening was informed of the decision on that day. This changes RRS 66.

15 SCORING

- 15.1 Eleven races are scheduled. Three races are required to be completed to constitute a regatta.
- 15.2 Each boat's regatta score shall be the total of her race scores excluding her worst score, except that if less than five races are sailed, each boat's series score shall be the total of her race scores.
- 15.3 Boats scored TLE will be scored points equal to the number of boats finishing within the time limit plus two points. This changes RRS 35, A4.2 and A11.

16 SAFETY

- 16.1 Each owner/skipper is requested to familiarize and share with crew the safety and first-aid notice found in the skipper bag.
- 16.2 Prior to the warning signal for the first race of each day in which it intends to compete, each boat is requested to check in by VHF or sail by the race committee signal boat and hail its sail number.
- 16.3 A boat retiring from a race or leaving the racing area early shall promptly notify the race committee either by hail, over VHF, or by telephone to the Event Chairman at 305-915-1438.

17 CREW

- 17.1 No changes to crew shall be allowed except with written approval of the Race Committee.
- 17.2 Requests for replacement of crew and any reply shall be posted on the regatta notice board.
- 17.3 The same number of persons shall sail throughout the event.

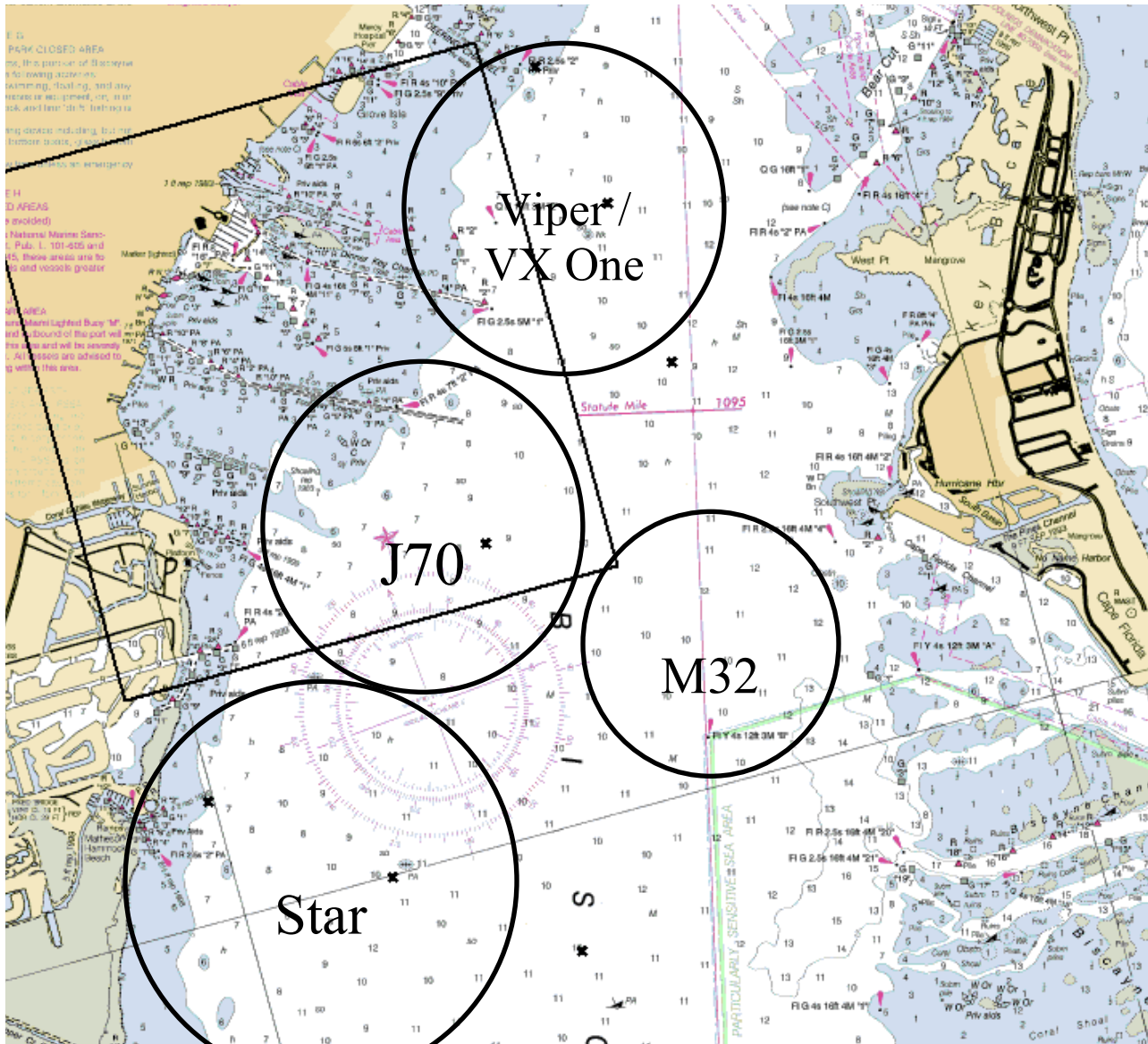
18 RADIO EQUIPMENT

A boat shall neither make radio or other data transmissions while racing nor receive radio or mobile phone communication not available to all boats, except for emergencies.

19 DISCLAIMER OF LIABILITY

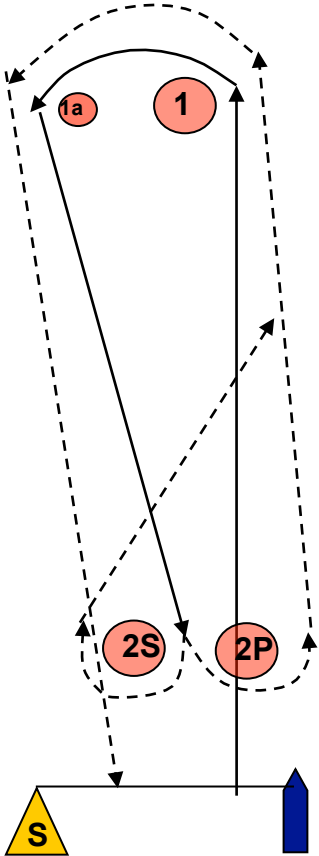
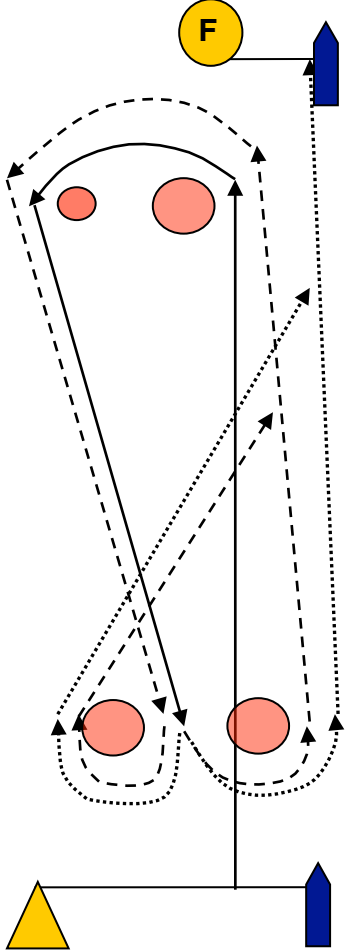
Sailing is an activity that carries with it an inherent risk of damage and injury. Competitors participate in this regatta entirely at their own risk and are reminded to pay special attention to RRS 4, Decision to Race. The race organizers, including the OA, CRYC, Race Committee, Protest Committee, sponsors, volunteers, or any other affiliated organization or official, will not be responsible for damage to any boat or other property or the injury to any competitor, including death, sustained as a result of practice for or participation in this event on the water or ashore. By participating in this event, each competitor agrees to release the race organizers from any and all liability associated with such competitor's participation in this event to the fullest extent permitted by law. Rule 82 will not apply to the event in accordance with US Sailing regulations.

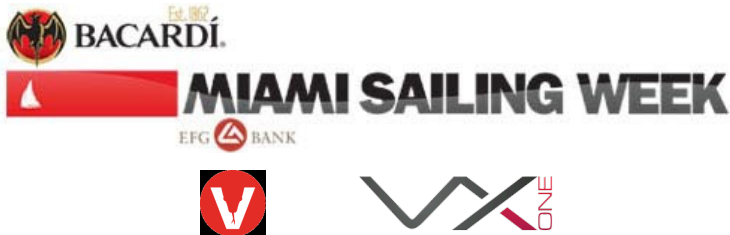
Attachment I – Approximate Racing Areas



Viper/VX One	Diameter – 1.5 nm	Center – N 25 43.200	W 080 11.800
J70	Diameter – 1.5 nm	Center – N 25 41.600	W 080 13.000
Star	Diameter – 2.0 nm	Center – N 25 40.000	W 080 14.100
M32	Diameter – 0.8 nm	Center – N 25 40.900	W 080 11.700

Attachment II: COURSE DIAGRAMS

Course 4		Course 5
 <p>The diagram for Course 4 shows a start line (S) on the left and a finish line (blue arrow) on the right. The course includes a start mark (S), a port mark (1), a port mark (1a), a starboard mark (2S), and a port mark (2P). The route is indicated by solid lines with arrows and dashed lines with arrows, showing a sequence of legs between these marks.</p>		 <p>The diagram for Course 5 shows a start line (yellow triangle) on the left and a finish line (blue arrow) on the right. The course includes a start mark (yellow triangle), a port mark (1), a port mark (1a), a starboard mark (2S), a port mark (2P), and a finish mark (F). The route is indicated by solid lines with arrows and dashed lines with arrows, showing a sequence of legs between these marks.</p>
<p>Start, 1 (port), 1a (port), between 2S and 2P, 1(port), 1a (port), finish</p>		<p>Start, 1 (port), 1a (port), between 2S and 2P, 1(port), 1a (port), between 2S and 2P, finish</p>



March 1 – 7, 2015

Viper 640 and VX One Classes

Sailing Instructions

1 RULES

- 1.1 The regatta will be governed by the rules as defined in *The Racing Rules of Sailing* (RRS).
- 1.2 The following prescriptions of US Sailing shall apply: 61.4, 67, and 76.1.
- 1.3 Class specific *rule* changes and updates are shown in Attachment III.

2 NOTICES TO COMPETITORS

- 2.1 Notices to competitors will be posted on the regatta notice board located at Coral Reef Yacht Club.
- 2.2 Announcements will be made to competitors using VHF Channel 73 on shore and on the water prior to, during and after racing. These announcements are courtesy only and failure to make or hear the announcements shall not be grounds for redress.

3 CHANGES IN SAILING INSTRUCTIONS

Any changes will be posted before 0800 on the day it will take effect, except that any change in the schedule of races will be posted before 2000 the day before the change is to take effect.

4 SIGNALS MADE ASHORE

- 4.1 Signals made ashore will be displayed from the flagpole located at the US Sailing Center. Signals may also be displayed from the flagpole at Shake-A-Leg but these are unofficial - timing or lack of signals at Shake-A-Leg shall not be grounds for redress.
- 4.2 When flag AP is displayed ashore, '1 minute' is replaced by 'not less than 45 minutes' in the race signal.

5 SCHEDULE

Thu, Mar 5 – Sat, Mar 7

1055 First Warning, subsequent races to follow.
No warning after 1400 on Saturday.

6 CLASS FLAG

Class flags will be a white flag with the class insignia.

7 THE COURSES

- 7.1 The diagrams and descriptions in Attachment II show the courses, including the approximate angles between legs and the order in which marks are to be passed.
- 7.2 If only one leeward mark is present it shall be rounded to port.
- 7.3 The course identifier, approximate magnetic bearing and distance in nautical miles to the first mark will be displayed from the race committee signal boat prior to the warning signal for each race.

An example is shown below:

5	Five legs, finishing to windward
270	Approx magnetic bearing to windward mark
1.0	1.0 nm to weather mark

8 MARKS

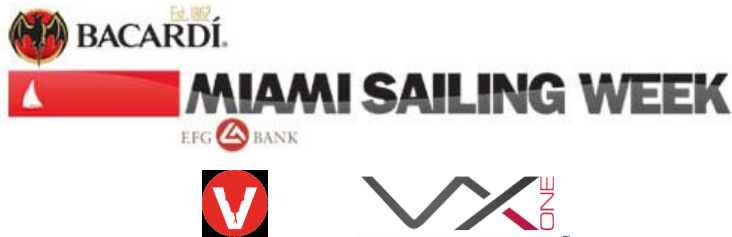
- 8.1 The windward and leeward marks will be red with EFG logo. Start and finish marks will be race committee vessels. The finish mark will be yellow inflatable with West Marine logo. The offset mark will be a small orange ball.
- 8.2 New marks, as provided in SI 11, will be orange cylinders.

9 THE START

The starting line will be between a staff displaying an orange flag on the race committee signal boat at the starboard end and either (a) the course side of the starting mark or (b) a staff displaying an orange flag on a boat at the port end.

10 RECALLS

- 10.1 When an individual recall is signaled, the race committee will attempt to hail OCS boats on VHF.
- 10.2 The timing and order of such hails or the failure of a boat to hear the hail shall not be grounds for redress, changing RRS 62.



11 CHANGE OF THE NEXT LEG OF THE COURSE

To change the next leg, the race committee will lay a new mark (or move the finishing line) and remove the old mark as soon as practicable. When in a subsequent change a new mark is replaced, it will be replaced by an original mark.

12 THE FINISH

The finishing line will be between a staff displaying an orange flag on a race committee boat and the course side of the finishing mark.

13 TIME LIMITS

- 13.1 If no boat has passed Mark 1 within 45 minutes, the race will be abandoned.
- 13.2 The time limit for the first boat to sail the course and finish is 90 minutes.
- 13.3 Boats still racing more than 30 minutes after the first boat sails the course and finishes will be scored TLE (Time Limit Expired) without a hearing. This changes RRS 35, A5, and A11.

14 PROTESTS AND REQUESTS FOR REDRESS

- 14.1 Protest forms are available in the Jury Room located at Coral Reef Yacht Club and shall be delivered there within the protest time limit which is 60 minutes after the race committee finish boat docks after the last race of the day.
- 14.2 The race committee will post a list of penalties being assigned by the race committee prior to the end of protest time limit. The deadline for requesting redress based on these scores will be either 30 minutes after posting of the penalty notice or the protest time limit, whichever is later. This changes RRS 62.2.
- 14.3 Notices will be posted within 30 minutes of the protest time limit to inform competitors of hearings and arbitration hearings in which they are parties or named as witnesses. Hearings will be held in the Jury Room, beginning as soon as practical.
- 14.4 On the last day of the regatta a request for reopening a hearing shall be delivered (a) within the protest time limit if the party requesting reopening was informed of the decision on the previous day; (b) no later than 30 minutes after the party requesting reopening was informed of the decision on that day. This changes RRS 66.

15 SCORING

- 15.1 Eleven races are scheduled. Three races are required to be completed to constitute a regatta.

15.2 Each boat's regatta score shall be the total of her race scores excluding her worst score, except that if less than six races are sailed, each boat's series score shall be the total of her race scores.

15.3 Boats scored TLE will be scored points equal to the number of boats finishing within the time limit plus two points. This changes RRS 35, A4.2 and A11.

16 SAFETY

- 16.1 Each owner/skipper is requested to familiarize and share with crew the safety and first-aid notice found in the skipper bag.
- 16.2 Prior to the warning signal for the first race of each day in which it intends to compete, each boat is requested to check in by VHF or sail by the race committee signal boat and hail its sail number.
- 16.3 A boat retiring from a race or leaving the racing area early shall promptly notify the race committee either by hail, over VHF, or by telephone to the Event Chairman at 305-915-1438.

17 CREW

- 17.1 No changes to crew shall be allowed except with written approval of the Race Committee.
- 17.2 Requests for replacement of crew and any reply shall be posted on the regatta notice board.
- 17.3 The same number of persons shall sail throughout the event.

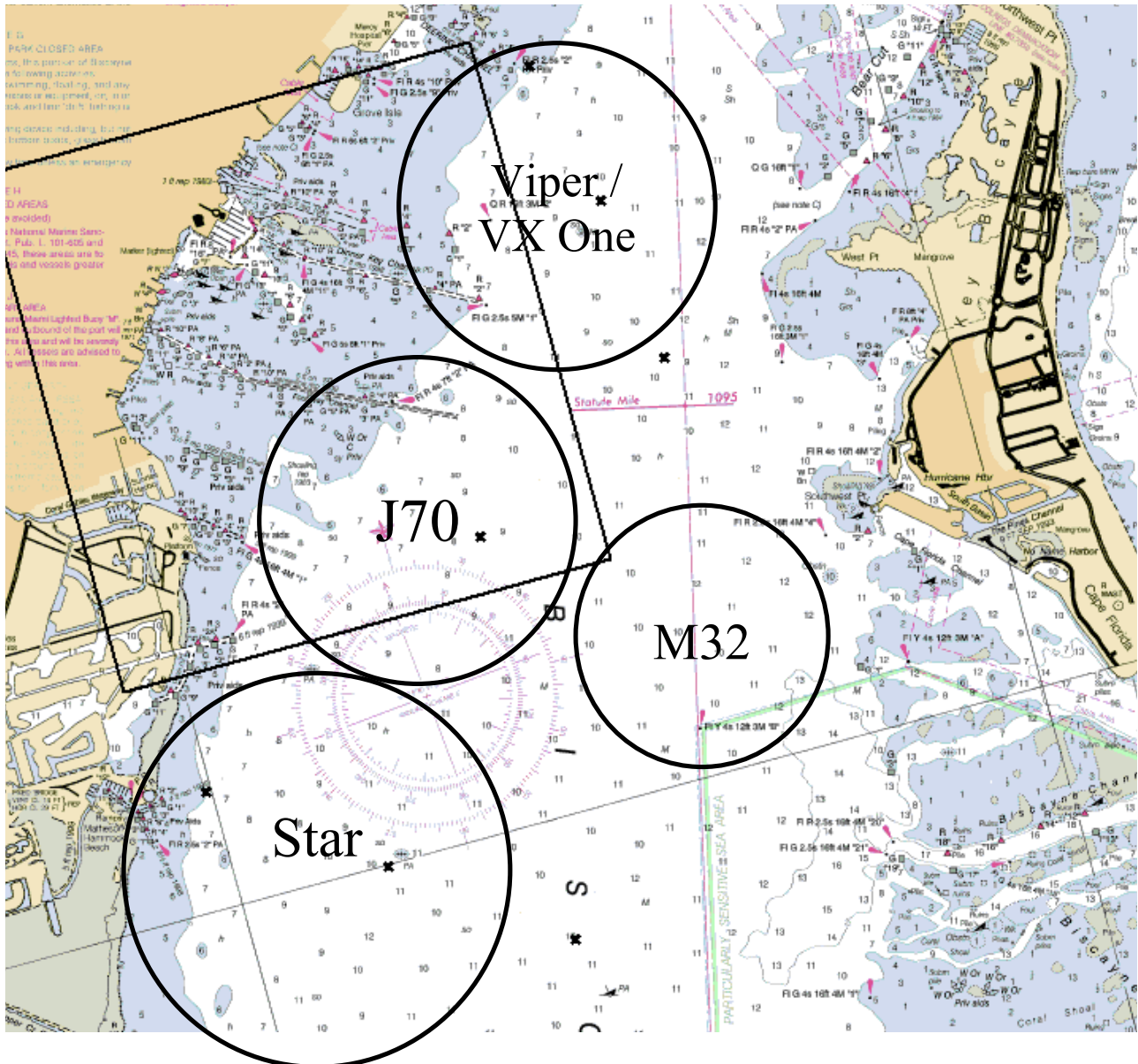
18 RADIO EQUIPMENT

A boat shall neither make radio or other data transmissions while racing nor receive radio or mobile phone communication not available to all boats, except for emergencies.

19 DISCLAIMER OF LIABILITY

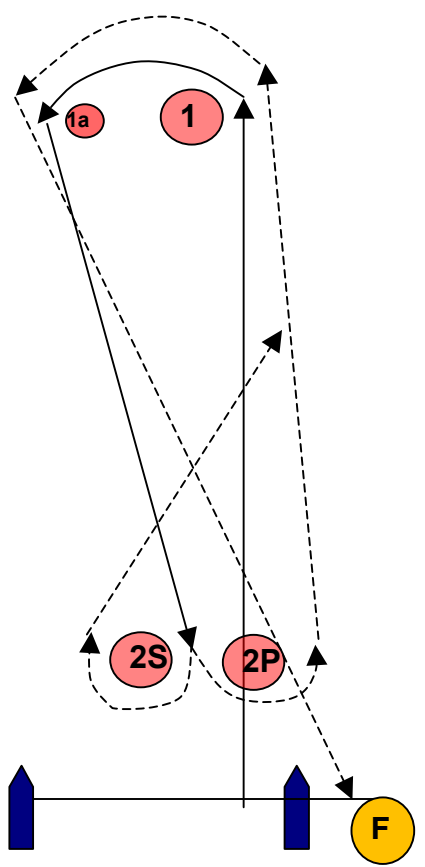
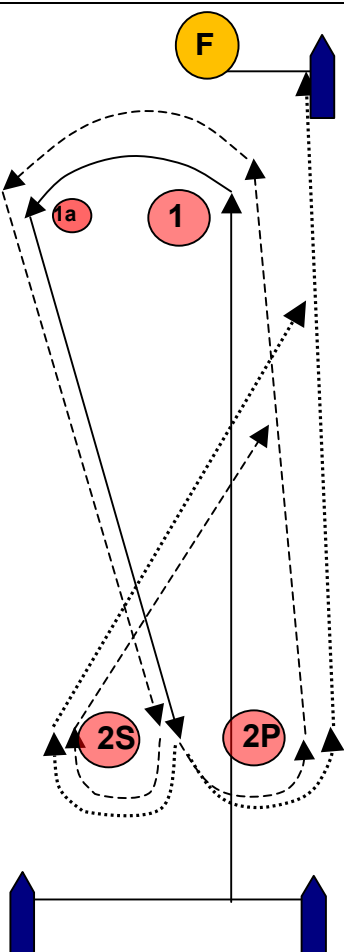
Sailing is an activity that carries with it an inherent risk of damage and injury. Competitors participate in this regatta entirely at their own risk and are reminded to pay special attention to RRS 4, Decision to Race. The race organizers, including the OA, CRYC, Race Committee, Protest Committee, sponsors, volunteers, or any other affiliated organization or official, will not be responsible for damage to any boat or other property or the injury to any competitor, including death, sustained as a result of practice for or participation in this event on the water or ashore. By participating in this event, each competitor agrees to release the race organizers from any and all liability associated with such competitor's participation in this event to the fullest extent permitted by law. Rule 82 will not apply to the event in accordance with US Sailing regulations.

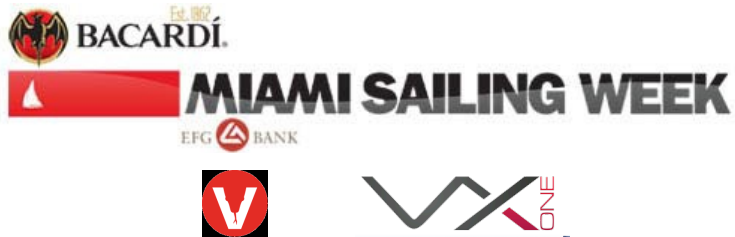
Attachment I – Approximate Racing Areas



Viper/VX One	Diameter – 1.5 nm	Center – N 25 43.200	W 080 11.800
J70	Diameter – 1.5 nm	Center – N 25 41.600	W 080 13.000
Star	Diameter – 2.0 nm	Center – N 25 40.000	W 080 14.100
M32	Diameter – 0.8 nm	Center – N 25 40.900	W 080 11.700

Attachment II: COURSE DIAGRAMS

Course 4		Course 5
		
<p>Start, 1 (port), 1a (port), between 2S and 2P, 1(port), 1a (port), finish</p>		<p>Start, 1 (port), 1a (port), between 2S and 2P, 1(port), 1a (port), between 2S and 2P, finish</p>



Attachment III: Class Specific *Rule* Changes and Updates

1 The following *rules* are changed for Vipers:

- 1.1 There are no minimum or maximum crew weight limits for this regatta, but boats shall race with three or four aboard.
- 1.2 RRS 44.1 is changed so that a Two-Turn Penalty is replaced by a One-Turn Penalty except for breaches of RRS 18.

2 The following *rules* are changed for VX One:

- 2.1 RRS 50.4 shall not apply.
 - 2.2 RRS 44.1 and 44.2 are changed as follows: Her penalty shall be a one turn penalty including one tack and one gybe.
- 2.3 RRS 42.2 (a) is changed as follows: Unlimited trimming and easing of the Asymmetrical Spinnaker to promote a plane shall be permitted.
- 2.4 The ERS Part I – Use of Equipment shall apply.
 - 2.5 Appendix H.9 Regatta Guidelines shall be considered rules under C.1.1.



*M32 Series Miami Winter 2015 | Event #3 BACARDI Miami Sailing Week 4-7 March
Organising Authority is BMSW, Cape Crow Yacht Club and the M32 Class Association*

SAILING INSTRUCTIONS

1 RULES

- 1.1 The regatta will be governed by the rules as defined in *The Racing Rules of Sailing*.
- 1.2 A number of rules are changed by this SI. These changes are approved by ISAF in accordance with RRS 86.2. A copy of approval letter will be posted on the official notice board.
- 1.3 No national authority prescriptions will apply. BMSW as described in the NOR.
- 1.4 For the purpose of the M32 2014 Class Rules, any Class Association approved class rule changes will be posted on the Official Notice Board. In addition to the Class Rules equipment described in Addendum B may or shall be on board.
- 1.5 Races will be umpired. SI Addendum U will apply and changes a number of rules.
- 1.6 Rule 31 (touching a mark) is deleted. A boat causing damages to racing marks, ground tackle or any race management equipment shall be liable for the costs of repairing or replacing such equipment.
- 1.7 The race committee and umpires will use VHF radio to provide information to the fleet. Failure to make this broadcast or failure to hear the broadcast shall not be grounds for granting redress. This changes RRS 62.1. Information about the VHF channel will be given at the skippers meeting.
- 1.8 If there is a conflict between languages the English text will take precedence.

2 EVENT ADVERTISING AND ADDITIONAL IDENTIFICATION

See SI Addendum C. For BMSW OA supplied branding for forward part of hulls is required.

3 NOTICES TO COMPETITORS

The official notice board is located at m32series.com/series/miami-winter-series/ and for BMSW the notices will be posted at the BMSW Village adjacent to the US Sailing Center in Coconut Grove.

4 CHANGES TO SAILING INSTRUCTIONS; COMMUNICATION ASHORE

- 4.1 Any change to the sailing instructions will either be presented at the skippers briefing or communicated directly to all skippers on the day it will take effect, except that any change to the schedule of races will be posted on the official notice board by 2000 on the day before it will take effect.
- 4.2 Other information may be given verbally ashore at the Race Village.
4.1 and 4.2 changes RRS 90.2(c)

5 FORMAT OF RACING

Each event will consist of fleet races on courses or as decided by the race committee.

6 SCHEDULE OF RACES

It is the intention of the race committee to sail as many races as practicable during racing time each day. All briefings at Rowing Club.

M32 Series Event 2

Thursday 26 Feb, 11 briefing and registration, 13-16 Practice racing



MIAMI SAILING WEEK



Friday 27 Feb, 10 briefing, 12-16 racing, after sail

Saturday 28 Feb, 10 briefing, 12-16 racing, after sail

Sunday 1 Mar, 10 briefing, 11-12 Pro-Am racing, 12-15 racing, after sail and prize giving

On Wednesday 4th March a match racing test event will be organised. This is not part of any regatta and will not be scored. For participation contact the OA.

M32 Series Event 3 – BACARDI Miami Sailing Week

Wednesday 4 Mar, 15-18 registrations, 18-20 party at BMSW.

Thursday 5 Mar, 9 briefing, 11-15 racing, 16-18 BACARDI happy hour

Friday 6 Mar, 9 briefing, 11-15 racing, 16-18 BACARDI happy hour

Saturday 7 Mar, 9 briefing 11-15 racing, 17-21 BACARDI happy hour and awards

-Registration, party, happy hour, awards at BMSW Hospitality Village: 2476 S. Bayshore Drive, Coconut Grove, Miami, FL 33133

-Briefings at rowing club.

7 GUEST RACERS AND PRO AM

The RC may request a team to sail with a guest for one or more races each day. Any such race shall not be scored. Each guest has to sign an OA issued disclaimer before going on the water.

8 RACING AREA

Biscayne Bay Course Delta as described at the briefing. A Map will be handed out.

9 THE COURSES

9.1 Courses used will be presented at the skippers meeting each day. This changes RRS J2.1(4).

9.2 Marks moved by boats during a race may be put back in its intended position. The moving of marks or failure to move marks back shall not be grounds for a request for redress by a boat. This changes RRS 60.1(b).

9.3 Course changes will not be signalled and the original mark will be moved to a new position. This changes RRS 33.

9.4 At a gate, if one of the gate marks is missing, the remaining mark shall be rounded to port.

10 MARKS

The course marks are conical inflatable marks of different colours. The starting and finishing marks will be the race committee starting vessel and inflatable mark.

11 THE START

11.1 Races will be started as follows:

4 min, warning, class flag up

3 min, preparatory, "P" or start rule up

1 min, "P" or start rule down

0 min, start, class flag down

Count down during the starting procedures, and individual or general recalls may be broadcasted on VHF channel as informed on skippers meeting. This changes RRS 26.

11.2 RRS 29.1, Individual Recall is changed as follows;

As an alternative to returning to start correctly, when at a boat's starting signal any part of her hull, crew or equipment is on the course side of the starting line, the race committee shall promptly display flag "X" flag with one sound.

The flag shall be displayed until all such boats, before the second leg, have become clear astern of all other boats, except those boats that;

- Are either also OCS, or

- are announced as 'delayed starters' by the RC.



For the purpose of recalls the second leg is defined by the extended line from the start boat to mark 1.

11.3 RRS 29.2 and Race Signals are changed by deleting the requirement for the display of flag First Substitute.

11.4 The starting line will be between a yellow flag on starting boat and an inflatable mark or as described at the skippers briefing.

11.5 A boat starting later than 3 minutes after her starting signal will be scored Did Not Start (DNS) without a hearing. This changes rules A4 and A5.

12 THE FINISH

The finishing line will be between an orange or blue flag and an inflatable mark as or as described at the skippers briefing.

13 PENALTY SYSTEM

See SI Addendum U.

14 TIME LIMITS AND TARGET TIMES

Target time 20 min. Time limits are at the discretion of the race committee. Failure to meet the target time shall not be grounds for a request for redress. This changes RRS 60.1(b).

15 PROTESTS AND REQUESTS FOR REDRESS

15.1 Notices of protests by the race committee or protest committee will be posted to inform boats under rule 61.1(b).

15.2 Breaches of instructions 2, 19, 20, 21, 24 and RRS 55 will not be grounds for a protest by a boat. This changes rule 60.1(a). Penalties for these breaches, and for breaches of class rules may be less than disqualification if the protest committee so decides.

16 SCORING

Low point scoring system. No score will be excluded.

The race committee may, before the warning signal of a race, declare the race a practice race. Practice races will not be scored.

17 EQUIPMENT AND MEASUREMENT CHECKS

A boat or equipment may be inspected at any time for compliance with the class rules and sailing instructions.

18 OFFICIAL BOATS

Official boats will be marked with M32 Series Flags. The flags may in addition indicate the function of the official boat (Media, Jury, Service etc.).

19 TRASH DISPOSAL

Trash shall not be thrown in the water but may be placed aboard support or official boats.

20 BERTHING

At the Rowing Club, boats shall be kept in their assigned places which may change from day to day.

21 RADIO COMMUNICATION

Except in an emergency, a boat shall neither make radio transmissions while racing nor receive radio communications not available to all boats. This restriction also applies to mobile communication devices.



22 PRIZES

Yes.

23 DISCLAIMER OF LIABILITY

Competitors participate in the regatta entirely at their own risk. See RRS 4, Decision to Race. The organizing authority will not accept any liability for material damage or personal injury or death sustained in conjunction with or prior to, during, or after the regatta.

24 INSURANCE

Each participating boat shall be insured with valid third-party liability insurance with a minimum cover of \$1,000,000.00 per event or the equivalent if expressed in other currency. Proof of insurance shall be provided upon request.

25 RIGHTS TO USE NAME AND LIKENESS

By participating in this event, competitors automatically grant to the organizing authority and the event sponsors the right, in perpetuity, to make, use, and show, at their discretion, any photography, audio and video recordings, and other reproductions of them made at the venue or on the water from the time of their arrival at the venue, until their final departure, without compensation.

26 SAFETY

Each owner/skipper is requested to familiarize and share with crew the safety and first-aid notice found in the skipper bag.

MD140222

SI Addendum C – Equipment

B1 In addition to the class rules requirements with regard to equipment, the following shall be carried on board:

- VHF radio with functional headset/earpiece or other instant operation installation
- Guest Racer handgrips.

If supplied by OA:

- Media and tracking equipment.

B2 The following may be carried on board as relevant:

- On coastal races GPS/plotter for navigational purposes.
- Y flag, red flag.

SI Addendum B – Event advertising and identification

C1 Event advertising

- M32 Series logotype on outside forward part of hulls. Supplied by the OA.

C2 Boat identification

- Team name visible on outside of both hulls.



SI addendum U- UMPIRED FLEET RACING

This addendum has been approved by ISAF in accordance with rule 86.2 and ISAF Regulation 28.1.3.

Version: - M32 Class-2015

These sailing instructions change the definition Clear Astern and Clear Ahead, Finish, Mark Room and Proper Course, and rules 13,17, 18,20, 28.2, 29, 30, 44, 60, 61, 62, 63, 64.1, 65, 66, 70 and 78.3.

Q1 CHANGES TO RACING RULES

Additional changes to rules are made in instructions Q2, Q3, Q4, and Q5.

Q1.1 Changes to the Definitions and the Rules of Parts 2, 3 and 4

- (a) The Definition 'Clear Astern and Clear Ahead; Overlap is changed to
One boat is *clear astern* of another when both of her hulls are behind a line abeam from the aftermost point of the other boat's hulls. However, a boat with either bow between the other boat's hulls is *clear astern*. The other boat is *clear ahead*. They *overlap* when neither is *clear astern*. However, they also *overlap* when a boat between them *overlaps* both. These terms always apply to boats on the same *tack*. They do not apply to boats on opposite *tacks* unless rule 18 applies or both boats are sailing more than ninety degrees from the true wind.'

- (b) The definition *Finish* is changed to
A boat *finishes* when any part of her hull, or crew or equipment in normal position, crosses the finishing line in the direction of the course from the last *mark*, either for the first time or after completing any penalties or, under rule 28.1, after correcting an error made at the finishing line

- (c) The Definition *Mark-Room* is deleted and replaced with; 'Mark Room
Room for a boat to sail her *proper course* to round or pass the *mark*.'

(d) Add to the definition Proper Course: 'A boat taking a penalty or maneuvering to take a penalty is not sailing a *proper course*.'

Delete RRS 13

Delete RRS 17

Delete RRS 18 and replace with

18 MARK ROOM

18.1 When Rule 18 Applies

Rule 18 applies between *boats* when they are required to leave a *mark* on the same side and at least one of them is in the *zone*. However, it does not apply between a *boat* approaching a *mark* and one leaving it.

18.2 Giving Mark-Room

- (a) When the first *boat* reaches the *zone*,
- (i) if *boats* are *overlapped*, the outside *boat* at that moment shall thereafter give the inside *boat mark-room*.



- (ii) if *boats* are not *overlapped*, the *boat* that has not reached the *zone* shall thereafter give *mark-room*.
- (b) If the boat entitled to *mark-room* leaves the *zone*, the entitlement to *mark-room* ceases and rule 18.2(a) is applied again if required.
- (c) If a boat obtained an inside *overlap* and, from the time the *overlap* began, the outside boat is unable to give *mark-room*, she is not required to give it.

18.3 Tacking or Gybing

When an inside *overlapped* right-of-way *boat* must tack or gybe at a *mark* to sail her *proper course*, until she tacks or gybes she shall sail no farther from the *mark* than needed to sail that course. Rule 18.3 does not apply at a gate *mark*.

Delete RRS 20 and replace with

‘20 ROOM TO TACK OR GYBE AT AN OBSTRUCTION

20.1 Hailing

When approaching an obstruction, a boat may hail for room to tack and avoid or gybe and avoid a boat on the same tack. However, she shall not hail if

- (a) She can avoid the obstruction safely without making a substantial course change,
- (b) She is sailing below close-hauled for tacking and above 90 degrees to the wind for gybing, or
- (c) The obstruction is a mark and a boat that is fetching it would be required to respond and change course.

20.2 Responding

- (a) After a boat hails, she shall give the hailed boat time to respond.
- (b) The hailed boat shall respond even if the hail breaks rule 20.1.
- (c) The hailed boat shall respond either by tacking or gybing as soon as possible, or by immediately replying ‘You tack’ for tack or ‘You gybe’ for gybe and then giving the hailing boat room to tack and avoid her or gybe and avoid her.
- (d) When the hailed boat responds, the hailing boat shall tack or gybe as soon as possible.
- (e) From the time a boat hails until she has tacked and avoided the hailed boat, rule 18.2 does not apply between them.

20.3 Passing On a Hail to an Additional Boat

When a boat has been hailed for *room* to tack or gybe and she intends to respond by tacking or gybing, she may hail another boat on the same *tack* for *room* to tack and avoid her or gybe and avoid her. She may hail even if her hail does not meet the conditions of rule 20.1. Rule 20.2 applies between her and the boat she hails.’

20.4 When rule 20 applies, the following arm signals are required in addition to the hails:

1. (1) for ‘Room to tack’, repeatedly and clearly pointing to windward; and
2. (2) for ‘You tack’, repeatedly and clearly pointing at the other boat and waving the arm to windward.



- Q1.2 Changes to Rules Involving Protests, Requests for Redress, Penalties and Exoneration
- (a) The first sentence of rule 44.1 is replaced with: 'A boat may take a 270° Penalty when she may have broken a rule of Part 2 (except rule 14 when she has caused damage or injury) or rule 31 or 42 while racing.'
 - (b) Rule 60.1 is replaced with 'A boat may protest another boat or request redress provided she complies with instructions Q2.1 and Q2.3.'
 - (c) The third sentence of rule 61.1(a) and all of rule 61.1(a)(2) are deleted.
 - (d) Rule 64.1(a) is changed so that the provision for exonerating a boat may be applied by the umpires without a hearing, and it takes precedence over any conflicting instruction of this addendum.
- Q2 PROTESTS AND REQUESTS FOR REDRESS BY BOATS
- Q2.1 While racing, a boat may protest another boat under a rule of Part 2 (except rule 14) or under rule 31; however, a boat may only protest under a rule of Part 2 for an incident in which she was involved. To do so she shall hail 'Protest' and conspicuously display a Y flag at the first reasonable opportunity for each. She shall remove the flag before, or at the first reasonable opportunity after a boat involved in the incident has taken a penalty voluntarily or after an umpire's decision.
- Q2.2 A boat involved in the incident may acknowledge breaking a rule by taking a penalty as described in rule Q3.2(a). If the protested boat does not take a penalty voluntarily, an umpire will decide whether to penalize any boat and signal the decision as provided in instruction Q3.1.
- Q2.3 A boat intending to
- (a) protest another boat under a rule other than instruction Q3.2 or Q4.2(a), or a rule listed in instruction Q2.1,
 - (b) protest another boat under rule 14 if there was contact that caused damage or injury, or
 - (c) request redress or
- shall hail or inform the race committee within 2 minutes of the finish of the last boat in the race.
- Q2.4 The race committee will promptly inform the protest committee about any protests or requests for redress made under instruction Q2.3.
- Q3 UMPIRE SIGNALS AND IMPOSED PENALTIES
- Q3.1 An umpire will signal a decision as follows:
- (a) A green and white flag with one long sound means 'No penalty.'
 - (b) A red flag with one long sound means 'A penalty is imposed or remains outstanding.' The umpire will hail or signal to identify each such boat.
 - (c) A black flag with one long sound means 'A boat is disqualified.' The umpire will hail or signal to identify the boat disqualified.
- Q3.2
- (a) A boat penalized under instruction Q3.1(b) shall take the penalty as follows:
 - (1) When her proper course is close hauled or above she shall gybe and, as soon as reasonably possible, luff to a close hauled course.
 - (2) When her proper course is below close hauled, she shall tack and, as soon as reasonably possible, bear away to a course that is more than 90 degrees from the true wind.
 - (b) A boat disqualified under instruction Q3.1(c) shall promptly leave the course area.
- Q4 PENALTIES AND PROTESTS INITIATED BY AN UMPIRE; ROUNDING OR PASSING MARKS
- Q4.1 When a boat
- (a) breaks rule 31 and does not take a penalty,



MIAMI SAILING WEEK



- (b) breaks rule 42,
 - (c) gains an advantage despite taking a penalty,
 - (d) deliberately breaks a rule,
 - (e) commits a breach of sportsmanship, or
 - (f) fails to comply with instruction Q3.2 or to take a penalty when required to do so by an umpire, an umpire may penalize her without a protest by another boat. The umpire may impose one or more 270° penalties to be taken as described in rule 44.2, each signalled in accordance with instruction Q3.1(b), or disqualify her under instruction Q3.1(c), or report the incident to the protest committee for further action. If a boat is penalized under instruction Q4.1(f) for not taking a penalty or taking a penalty incorrectly, the original penalty is cancelled.
- Q4.2 (a) A boat shall not round or pass a mark on the wrong side. If she does so, she may correct her error as provided in rule 28.2 only if she does so before she rounds or passes the next mark or finishes.
- (b) When a boat breaks instruction Q4.2(a) and fails to correct her error before rounding or passing the next mark or finishing, an umpire may disqualify her under instruction Q3.1(c).
- Q4.3 An umpire who decides, based on his own observation or a report received from any source, that a boat may have broken a rule, other than instruction Q3.2 or Q4.2(a) or a rule listed in instruction Q2.1, may inform the protest committee for its action under rule 60.3.
- Q4.4 (a) When the umpires observe or receive a report of “hard” contact (defined as hull, spars or rigging against another boats hull, spars or rigging), between boats they will impose a two point penalty on the penalised boat in the incident and a one point penalty on the other boat without a hearing. The penalty on the right of way boat may be waived.
- (b) When there is contact that causes damage they may impose further penalties on either one or both boats.
- Q5 PROTESTS; REQUESTS FOR REDRESS OR REOPENING; APPEALS; OTHER PROCEEDINGS
- Q5.1 No proceedings of any kind may be taken in relation to any action or non-action by an umpire.
- Q5.2 A boat may not base an appeal on an alleged improper action, omission or decision of the umpires or the protest committee. In rule 66 the third sentence is changed to ‘A party to the hearing may not ask for a reopening.’
- Q5.3 (a) Protests and requests for redress need not be in writing.
- (b) The protest committee may take evidence and conduct the hearing in any way it considers appropriate and may communicate its decision orally.
- (c) If the protest committee decides that a breach of a rule has had no effect on the outcome of the race, it may impose a penalty of points or fraction of points or make another arrangement it decides is equitable, which may be to impose no penalty.
- Q5.4 The race committee will not protest a boat, except following a report under rule 43.1(c) or 78.3.
- Q5.5 The protest committee may protest a boat under rule 60.3. However, it will not protest a boat for breaking instruction Q3.2 or Q4.2 (a), a rule listed in instruction Q2.1.

PRO Mattias Dahlstrom
Cell: (305) 487-1507